

THIS DRAWING REPRESENTS FLORIDA MARINE TANKS, INC. INTERPRETATION & /OR SUGGESTED RE DESIGN ON THE PARTS REQUESTED. CUSTOMER MUST INSURE THAT ALL SPECIFICATIONS MEET WITH HIS DESIGN CRITERIA & RETURN APPROVED/DATED COPY FOR ORDER & /OR QUOTE INITIATION.

APPROVED BY: _____ DATE _____

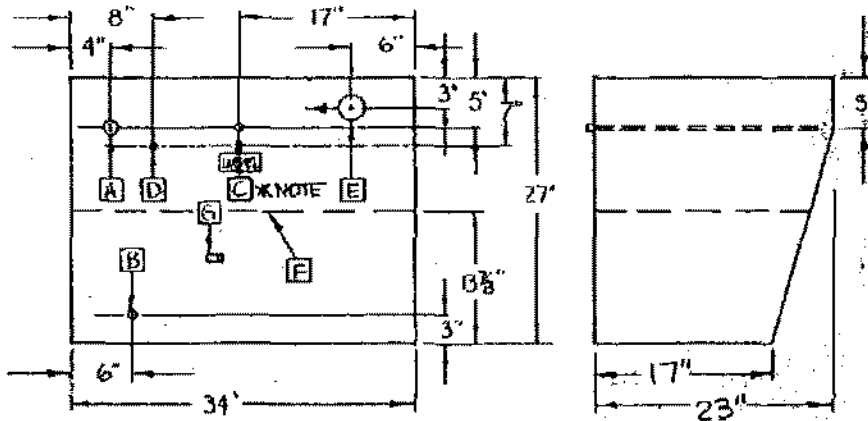
FMT-76-CARTER
76.5 GALLONS

FINISH: GRAY PRIMER

SPECIFICATIONS:

- A FILL 1 1/2" NPT.
- B VENT 1" NPT. w/ 1" x 3/4" ST. ST. REDUCING BUSHING
- * C PICKUP 1/2" NPT. w/ REMOVABLE TUBE & 1/2" x 3/8" ST. ST. RED. BUSH.
- D RETURN 3/4" NPT. w/ 3/4" x 1/2" ST. ST. REDUCING BUSHING
- E SENDER - ADJ. 1 1/2" x 1 1/2"
- F BAFFLE (1 REQ'D) AS SHOWN
- G GROUND TAB - AS SHOWN

MATERIAL .125 ALUMINUM



* NOTES CUT UP TUBE 22 1/4" LONG @ 45° ON BOTTOM, INSERT INTO 3/8" RED BUSHING UNDERCUT 1/4", TIG WELD, & PRESSURE CHECK

CUTTING SPECS:

- BDY: 67 1/16 x 33 3/4
- TOP: 26 3/4 x 33 3/4
- END: 26 3/4 x 22 3/4
- BAF: 22 x 35 1/4

REVISIONS:

DATE	CHANGES	DWG. NO.
5-12-77	ORIGINAL DRAWING	TR-79-B
6-1-77	ADDED SENDER MOVED ALL PICKUP	TR-79-8A
7-8-77	REDUCED TOP END TO MAKE PORTABLE	TR-79-8B
7-15-77	1. CHANGED BUANE FROM 1/2" TO 3/8"	TR-79-8C
7-15-77	2. MODIFIED DIMENSIONS (CAPACITY)	TR-79-8D
9-23-77	CHANGED LOCATION OF VENT RETURN	TR-79-8E
8-23-79	REVISED PICKUP TO 3/8" S. TUBE	TR-79-8F

TOLERANCES		FLORIDA MARINE TANKS, INC.	
NO.	DATE	BY	
1	11-12-79		16800 24 N.W. 48 AV. HIALEAH FLA 33014
2	SR/HRH		RICHARD CARTER JR, 76 GAL. DIESEL TANK FOR F424.
3			SCALE 1" = 1" MATERIAL .125 ALUMINUM
4			DATE 6-24-79 DRAWING NO. CARTER-76 51105
5			TRACED